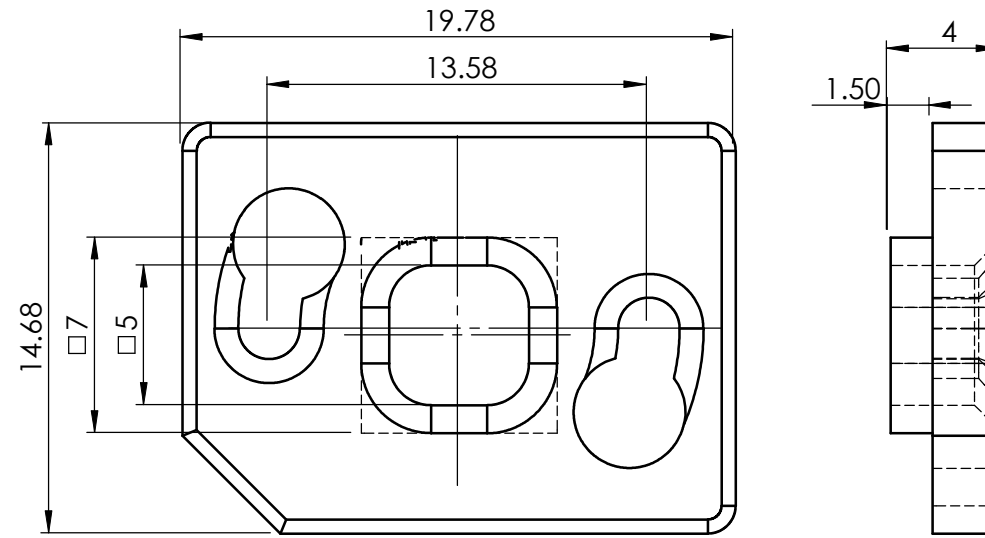
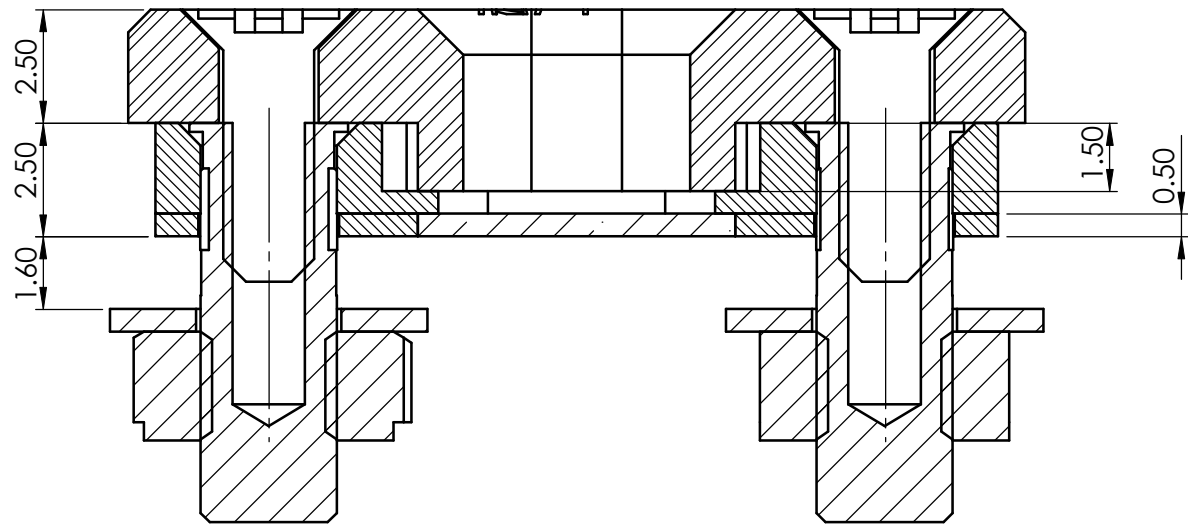
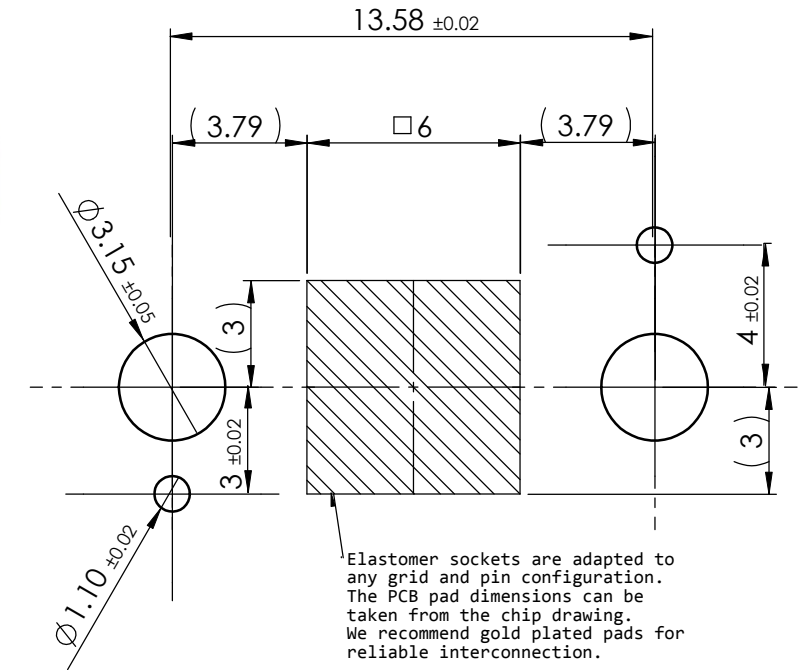
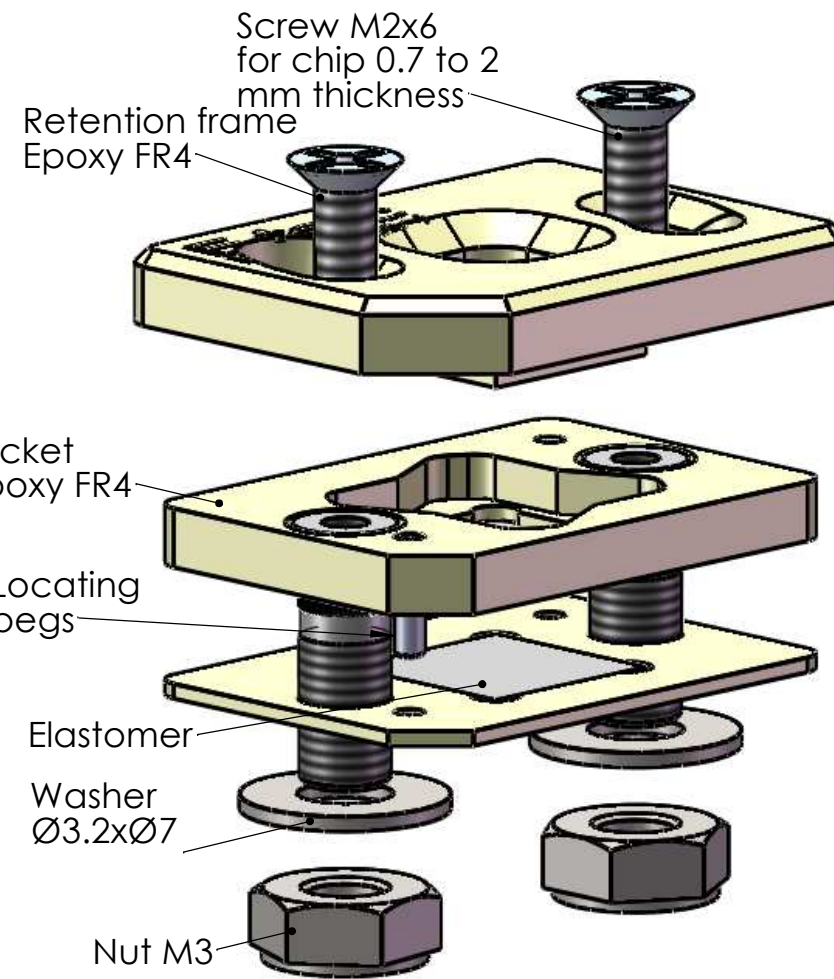
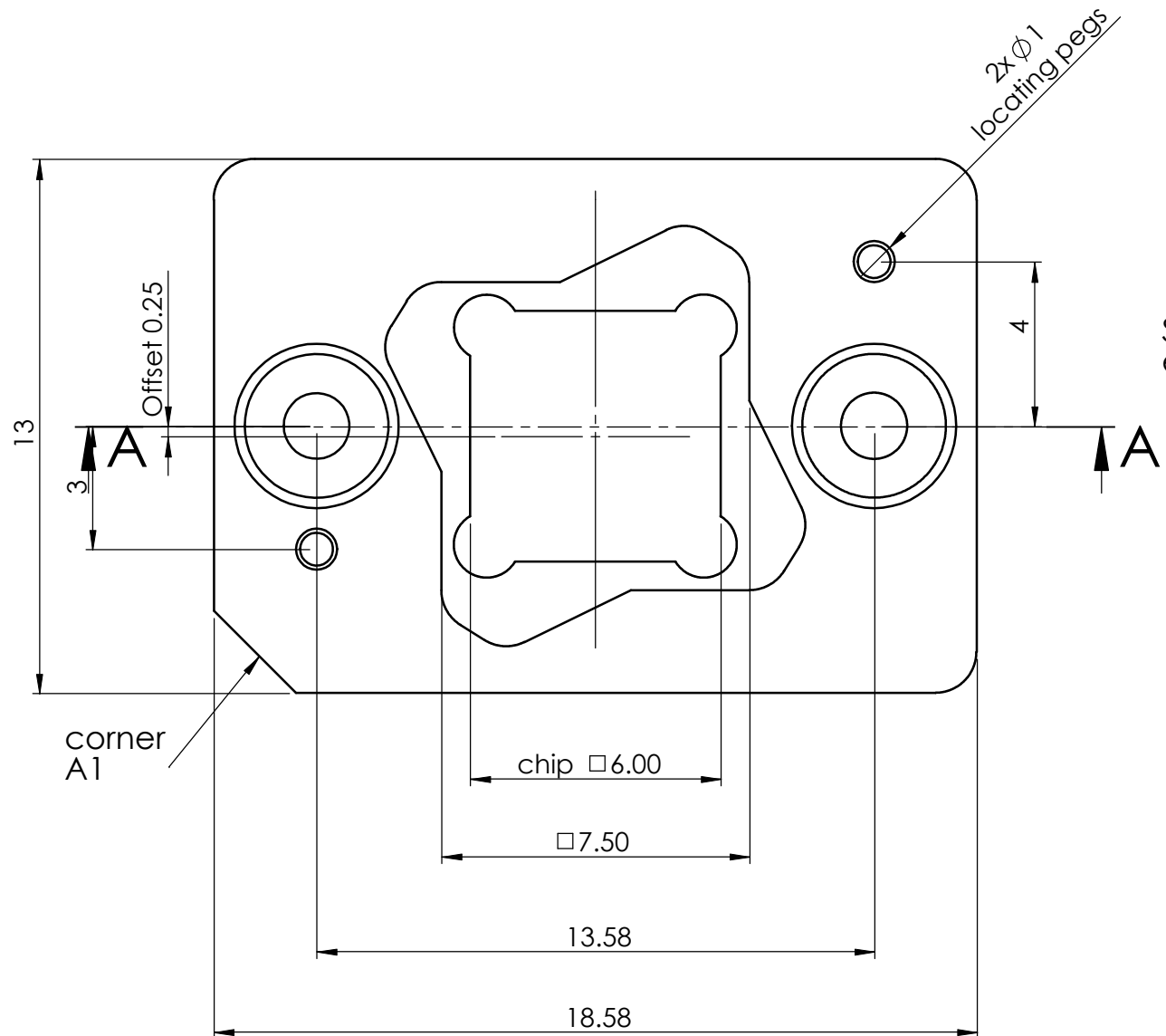


COUPE A-A



RETENTION FRAME



PCB LAYOUT

Elastomer sockets are adapted to any grid and pin configuration. The PCB pad dimensions can be taken from the chip drawing. We recommend gold plated pads for reliable interconnection.

IMPORTANT NOTE
PCB layout is symmetrical as drawn and does not emulate the socket dimensions

CAUTION SOCKET DIMENSIONS ONLY DO NOT USE FOR PCB LAYOUT

<p>A3H Scale 6:1</p> <p>UNLESS OTHERWISE SPECIFIED: DIMENSIONS ARE IN MILLIMETERS GENERAL TOLERANCES ISO 2768m</p>	<p>ELW999-9991-06MI55L</p>		<p>Remark: QFN Twist Lock socket, Chip 6x6 code MI = TwistLock + Opentop Max</p>
	<p>Order code"</p>		
<p>REV 0</p> <p>modif:</p>	<p>NAME DATE</p> <p>DRAWN 14.02.2011</p> <p>REV'D - -</p> <p>CHK'D - -</p> <p>APPV'D 14.02.2011</p>	<p>ELW6</p> <p>"Description Elastomer Socket for M-QFN 6x6mm</p>	