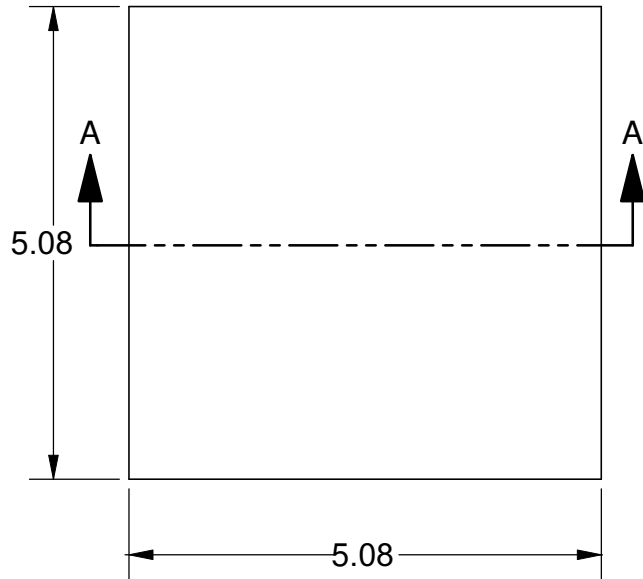
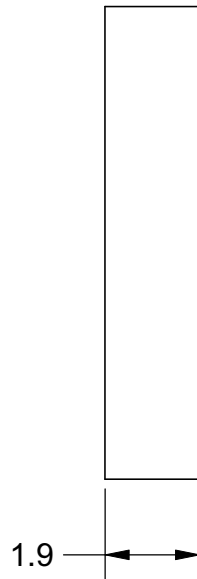


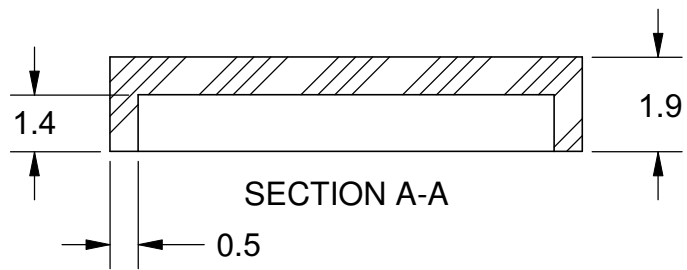
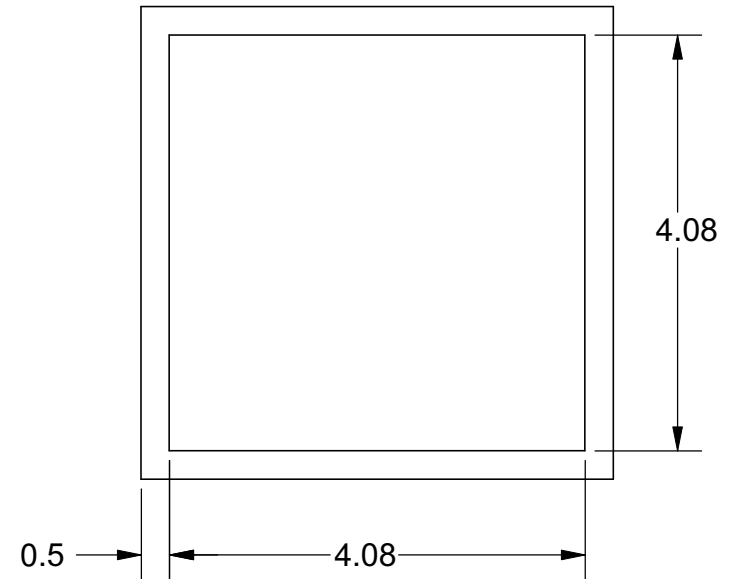
TOP VIEW



SIDE VIEW


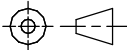


BOTTOM VIEW



Notes: (Unless Otherwise Specified).

- 1) MATERIAL:
 - A) LCP - LIQUID CRYSTAL POLYMER.
 - B) PREFORM NONE.
- 2) LID ATTACH:
 - A) REMOVABLE: USE KAPTON TAPE OF EQUIVALENT.
 - B) PERMANENT: USE EPOXY PER CUSTOMER CHOICE.
- 3) STORAGE LIFE: NO LIMIT @ 25 °C.
- 4) COLOR: BLACK.
- 5) DIMENSIONS: mm.

TOLERANCE UNLESS NOTED		APPROVALS		DATE	 Mirror Semiconductor™			
X.XX	+/- 0.13	DRAWN J. Hines		7/31/2011				
X.XXX	+/- 0.06	ENG			TITLE 5.08 X 5.08 mm DOME LID			
X.XXXX	+/- 0.03	MFG			L-CAP5.1T1.9-BLACK			
ALL DIMENSIONS IN		THIRD ANGLE PROJECTION		QA	SCALE 12.5:1	SIZE A	DRAWING NO. 252480	REV A
<input checked="" type="checkbox"/> INCHES	<input type="checkbox"/> MILLIMETERS			CUST	DO NOT SCALE DRAWING		SHEET 1 OF 1	
				REVISED				