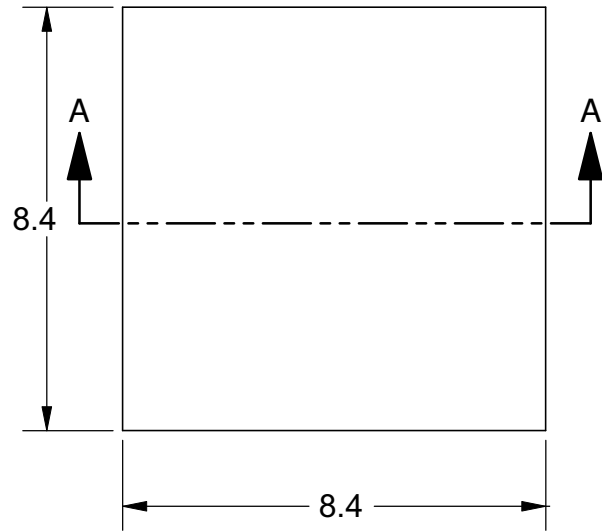
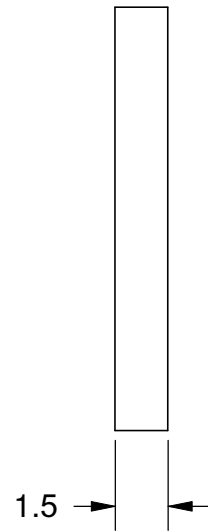


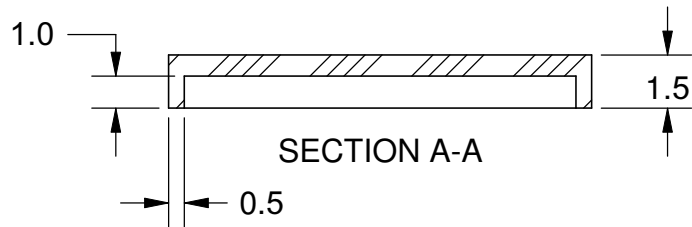
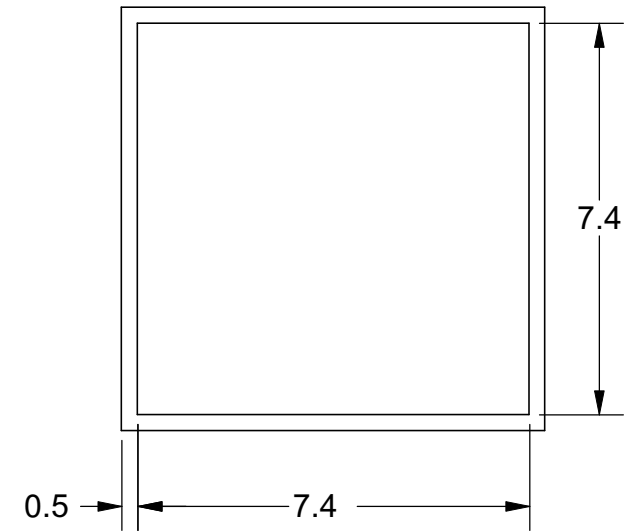
TOP VIEW



SIDE VIEW


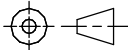


BOTTOM VIEW



Notes: (Unless Otherwise Specified).

- 1) MATERIAL:
 - A) LCP - LIQUID CRYSTAL POLYMER.
 - B) PREFORM NONE.
- 2) LID ATTACH:
 - A) REMOVABLE: USE KAPTON TAPE OF EQUIVALENT.
 - B) PERMANENT: USE EPOXY PER CUSTOMER CHOICE.
- 3) STORAGE LIFE: NO LIMIT @ 25 °C.
- 4) COLOR: BLACK.
- 5) DIMENSIONS: mm.

TOLERANCE UNLESS NOTED		APPROVALS		DATE		 Mirror Semiconductor™							
X.XX	+/- 0.13	DRAWN J. Hines		7/31/2011						TITLE 8.4 X 8.4 mm DOME LID L-CAP8.4T1.5-BLACK			
X.XXX	+/- 0.06												
X.XXXX	+/- 0.03	ENG				SCALE		SIZE	DRAWING NO.	REV			
ALL DIMENSIONS IN		MFG				7:1		A	283480	A			
<input checked="" type="checkbox"/> INCHES <input type="checkbox"/> MILLIMETERS		THIRD ANGLE PROJECTION				REVISED		DO NOT SCALE DRAWING		SHEET 1 OF 1			